



CELLO® HR 290 VLC

Cello® HR 290 VLC: Soft grey melamine-resin foam for noise absorption and thermal insulation purposes, laminated with a mechanically robust, hydrophobic layer of non-woven made from PANOX/PES fibers.

Applications: Cabins/casings/hoods, machine construction



TECHNICAL DATA

FLAMMABILITY	▶ FMVSS 302, DIN 75 200, fulfilled ▶ ISO 3795, burning rate < 100 mm/min
TEMPERATURE RESISTANCE	-40°C to +150°C
THERMAL CONDUCTIVITY OF MELAMINE FOAM / EN 12667	≤ 0.034 W/(m·K) at 10°C
DENSITY OF MELAMINE FOAM / DIN EN ISO 845	9 ± 1,5 kg/m³

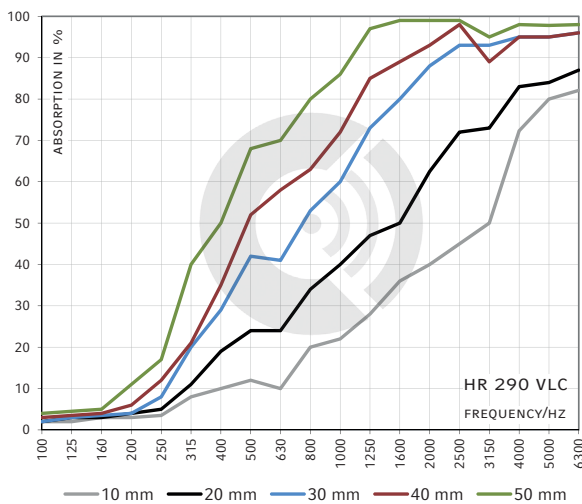
DIMENSIONS

PRODUCT	THICKNESS [mm]	THICKNESS TOLERANCE [mm]	SHEETS* [mm]
HR 290 VLC	10, 20, 30, 40, 50	to 30 ± 1,2 > 30-50 ± 1,7	1250 X 1250 or 2100 X 1250

Other thicknesses / dimensions on request. Ready-to-use parts according to your specifications or drawing.

*Untrimmed: Effective dimensions guaranteed as ordered, may be exceeded by some layers (foam, film, non-woven etc.).

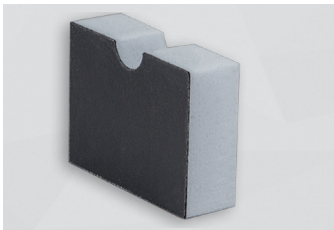
IMPEDANCE TUBE / DIN 10 534-2



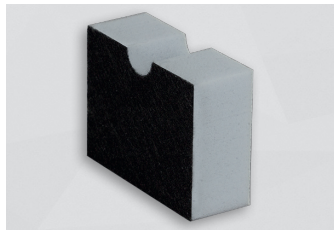
BENEFITS	▶ Oil-, water- and fuel-repellent surface (HR 290 VLC) ▶ The non-woven surface layer increases the material's resistance against mechanical damage ▶ High temperature resistance ▶ Low thermal conductivity
AIR POCKET TOLERANCES	When melamine foam is produced, air pockets may form that become visible later on when the foam block is cut into sheets. The following tolerances apply for such air pockets for edges: Ø up to 5 mm: no restrictions Ø ≥ 5-15 mm: a maximum of 10 air pocket per m² Ø ≥ 15-25 mm: a maximum of 1 air pocket per m²
ADVICE	For sealing trimmed edges, we recommend our adhesive tape Cello® VLC-01



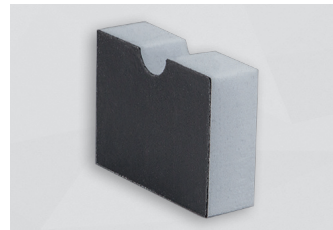
OPTIONS		(FURTHER OPTIONS ON REQUEST)
HR 290 VLC NK	no self-adhesive equipment	
HR 290 VLC SK	with self-adhesive finish	
HR 290 VL	same as HR 290 VLC, but non-woven layer is made from PES fibers only (no PANOX)	FLAMMABILITY ▶ FMVSS 302, DIN 75 200, fulfilled ▶ ISO 3795, burning rate < 100 mm/min
HR 290 VLC HT	same as HR 290 VLC, but with an additional film layer underneath the non-woven.	FLAMMABILITY ▶ FMVSS 302, DIN 75 200, fulfilled ▶ ISO 3795, burning rate < 100 mm/min
HR 290/91-01 VLC	same as HR 290 VLC, but with an additional 100 µm PUR-film layer on top of the non-woven.	FLAMMABILITY ▶ FMVSS 302, DIN 75 200, fulfilled ▶ ISO 3795, burning rate < 100 mm/min
HR 290 VLC CS-01	trimmed edges spray-coated for protection against the ingress of dirt and humidity. Option available only for cut-to-measure parts.	FLAMMABILITY ▶ FMVSS 302, DIN 75 200, fulfilled ▶ ISO 3795, burning rate < 100 mm/min



HR 290 VLC HT



HR 290 VL



HR 290/91-01 VLC