

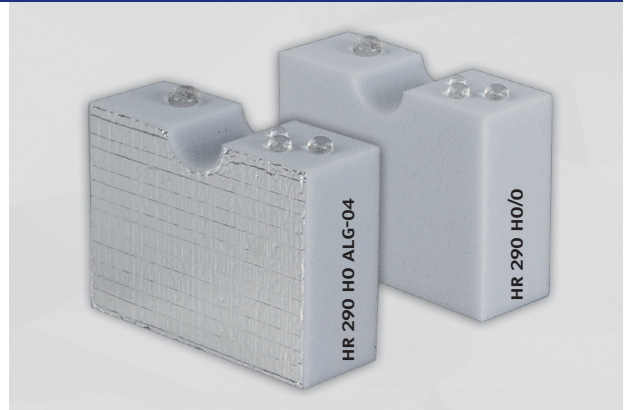


## CELLO® HR 290 HO/O • HR 290 HO ALG-04

**Cello® HR 290 HO/O:** Soft grey melamine-resin foam, oil- and water-repellent, for noise absorption and thermal insulation purposes.

**Cello® HR 290 HO ALG-04:** Laminated with a silver-colored aluminum foil with scrim reinforcement for enhanced tear resistance.

Applications: Heating/ventilation/AC systems, machine construction, rail vehicles

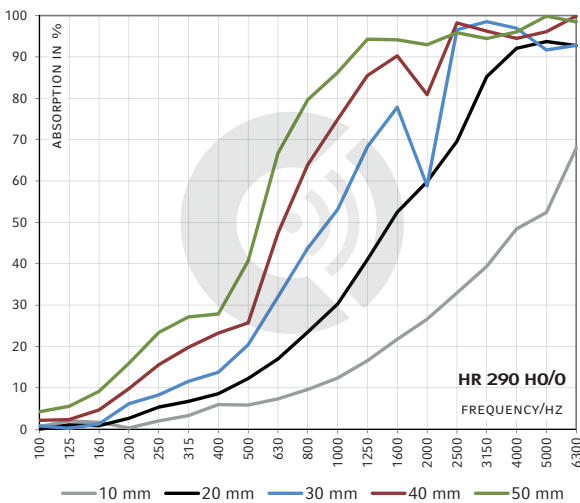


### TECHNICAL DATA

<b>FLAMMABILITY</b>	<ul style="list-style-type: none"> <li>▶ FMVSS 302, DIN 75 200, fulfilled</li> <li>▶ ISO 3795, burning rate &lt; 100 mm/min</li> <li>▶ EN 45545-2: requirement R1 + R7 + R17, HL 2 fulfilled (≥ 5 mm) (HR 290 HO/O)</li> <li>▶ EN 45545-2: requirement R1 + R7 + R17, HL 3 fulfilled (10 mm) (HR 290 HO/O SK)</li> <li>▶ EN 45545-2 2020: requirement R1 + R7 + R17, HL 3 fulfilled (5-100 mm) (HR 290 HO ALG-04)</li> <li>▶ NFPA 130: ASTM E 162 and 662 fulfilled (HR 290 HO/O SK)</li> <li>▶ ASTM E 1354 fulfilled (HR 290 HO/O SK)</li> <li>▶ Bombardier SMP 800-C (HR 290 HO/O SK)</li> </ul>
<b>TEMPERATURE RESISTANCE</b>	<ul style="list-style-type: none"> <li>▶ HR 290 HO/O: -50°C to +180°C</li> <li>▶ HR 290 HO ALG-04: -50°C to +140°C</li> </ul>
<b>THERMAL CONDUCTIVITY OF MELAMINE FOAM / EN 12667</b>	≤ 0.035 W/(m·K) at 10°C
<b>DENSITY OF MELAMINE FOAM / DIN EN ISO 845</b>	9 ± 1.5 kg/m <sup>3</sup>
<b>CHEMICAL RESISTANCE / DIN 53428</b>	Resistance against light fuel, paraffin oil, glycerin and other chemicals



### IMPEDANCE TUBE / DIN 10 534-2



- |                 |   |
|-----------------|---|
| <b>BENEFITS</b> | <ul style="list-style-type: none"> <li>▶ Oil- and water-repellent finish</li> <li>▶ Good fire safety rating</li> <li>▶ High temperature resistance</li> <li>▶ Low thermal conductivity</li> <li>▶ The aluminum foil completely prevents the penetration of dust and liquids into the foam (HR 290 HO ALG-04)</li> <li>▶ Reflects heat radiation (HR 290 HO ALG-04)</li> </ul> |
| <b>OPTIONS</b>  | <ul style="list-style-type: none"> <li>... NK: no self-adhesive equipment</li> <li>... SK: with self-adhesive finish</li> </ul>   |

## DIMENSIONS

PRODUCT	THICKNESS [mm]	THICKNESS TOLERANCE [mm]	SHEETS* [mm]
HR 290 HO/O	5, 10, 20, 30, 40, 50	± 1	1050 X 1250 or 2100 X 1250
HR 290 HO ALG-04	5, 10, 20, 30, 40, 50	to 30 ± 1.2 > 30-50 ± 1.7	1050 X 1250 or 2100 X 1250

Other thicknesses / dimensions on request. Ready-to-use parts according to your specifications or drawing.

\*Untrimmed: Effective dimensions guaranteed as ordered, may be exceeded by some layers (foam, film, non-woven etc.).

## MORE INFORMATION

**AIR POCKET** When melamine foam is produced, air pockets may form that become visible later on when the foam block is cut into sheets. The following tolerances apply for such air pockets for face side / edges:

**TOLERANCES**

- Ø up to 5 mm: no restrictions
- Ø ≥ 5-15 mm: a maximum of 10 air pocket per m<sup>2</sup>
- Ø ≥ 15-25 mm: a maximum of 1 air pocket per m<sup>2</sup>

**ADVICES**

- ▶ The oil- and water-repellent finish may lead to a slightly mottled surface appearance of the foam
- ▶ For sealing trimmed edges, we recommend our adhesive tape Cello<sup>®</sup> ALU-04.  
Adhesive tape tested acc. to EN 45545-2, meets requirements R1 + R7 + R17, HL 3

